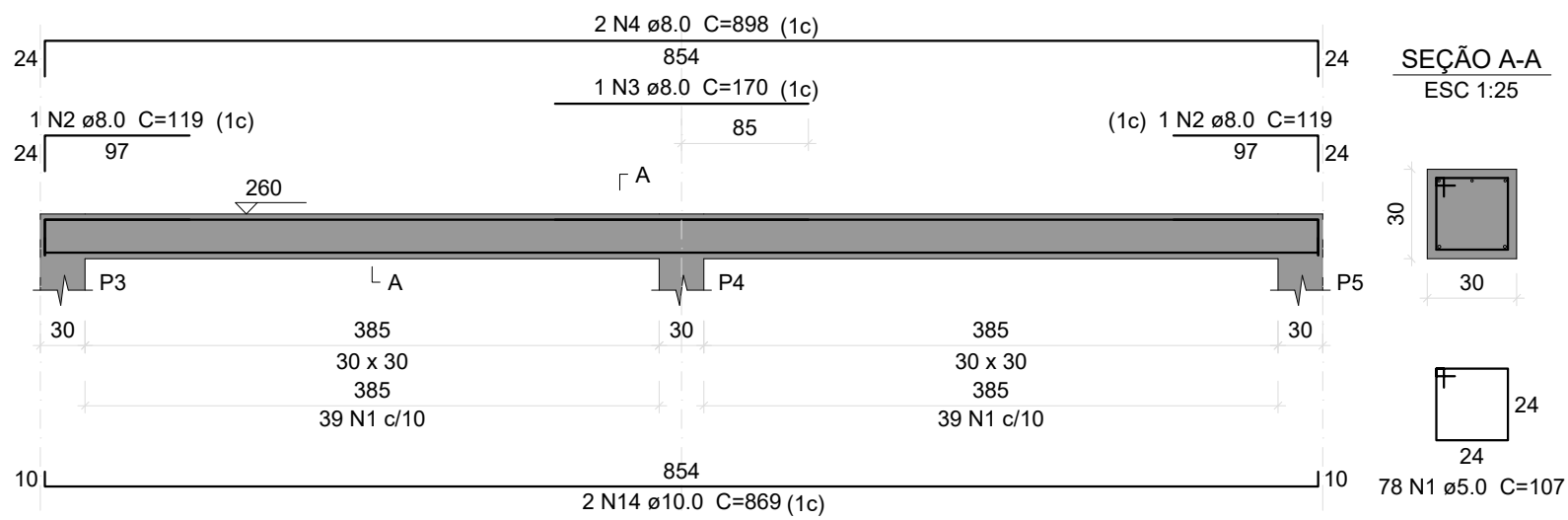


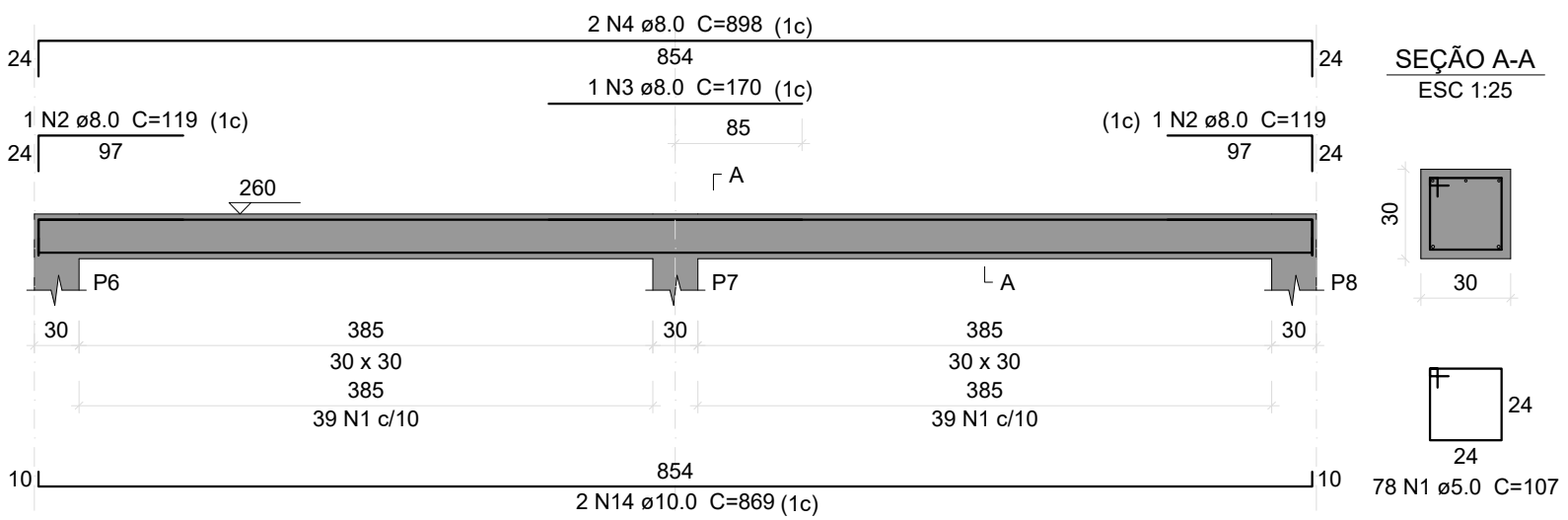
VT - 1

ESC 1:50



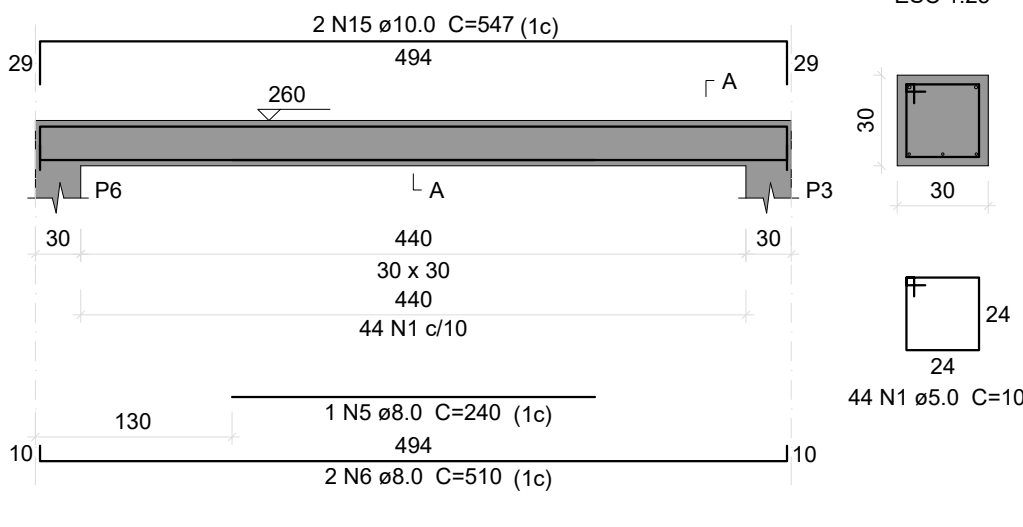
VT - 2

ESC 1:50



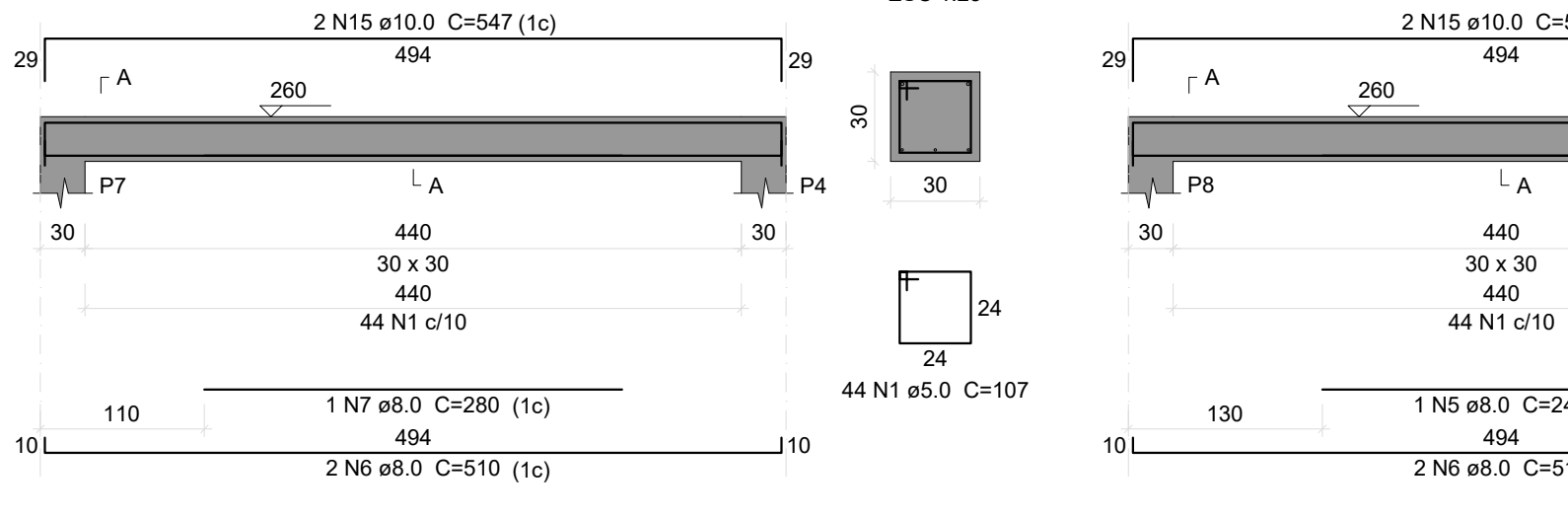
VT - 3

ESC 1:50



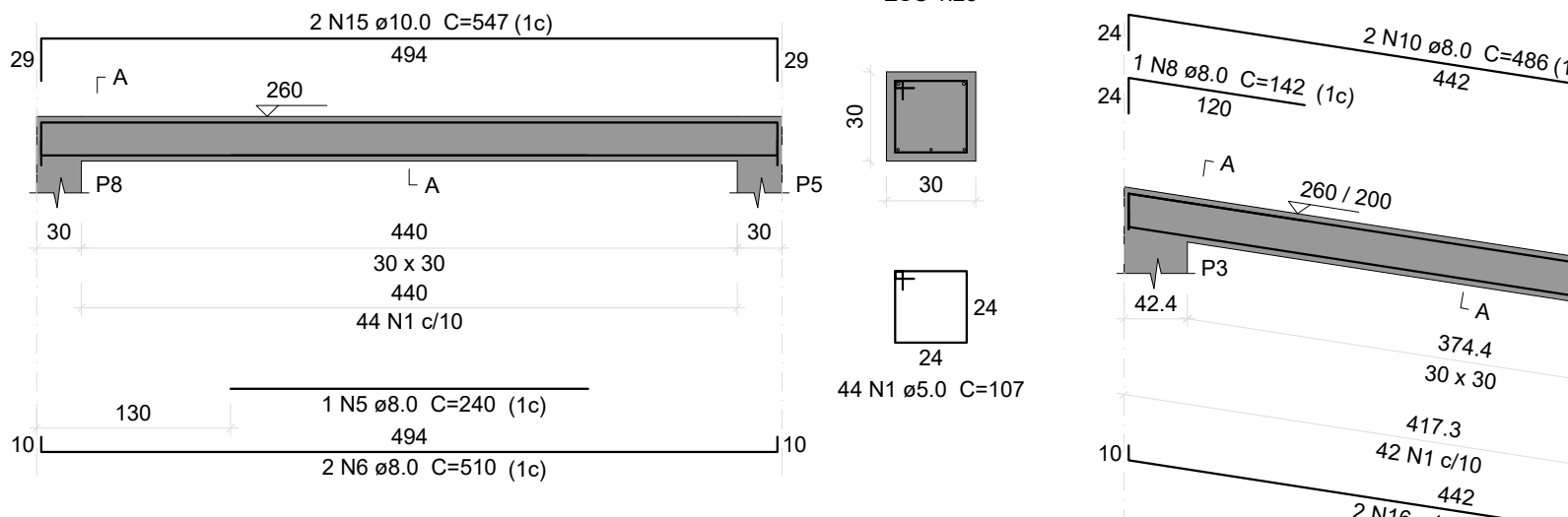
VT - 4

ESC 1:50



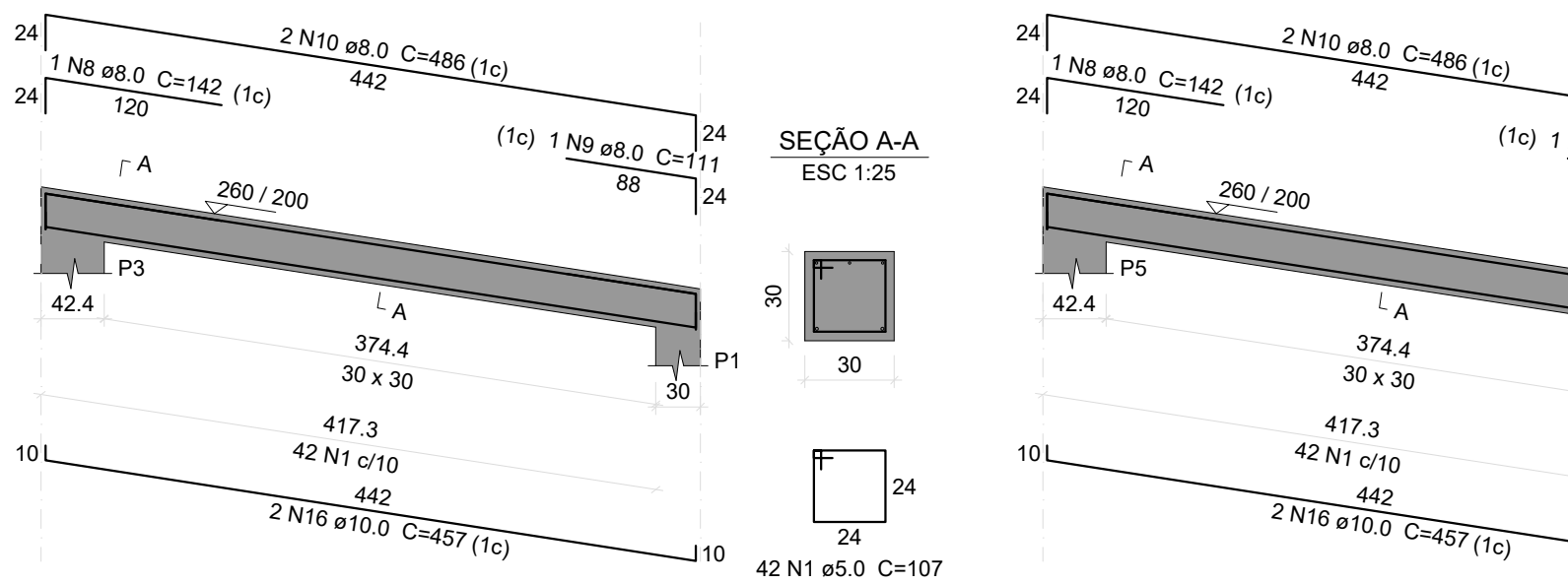
VT - 5

ESC 1:50



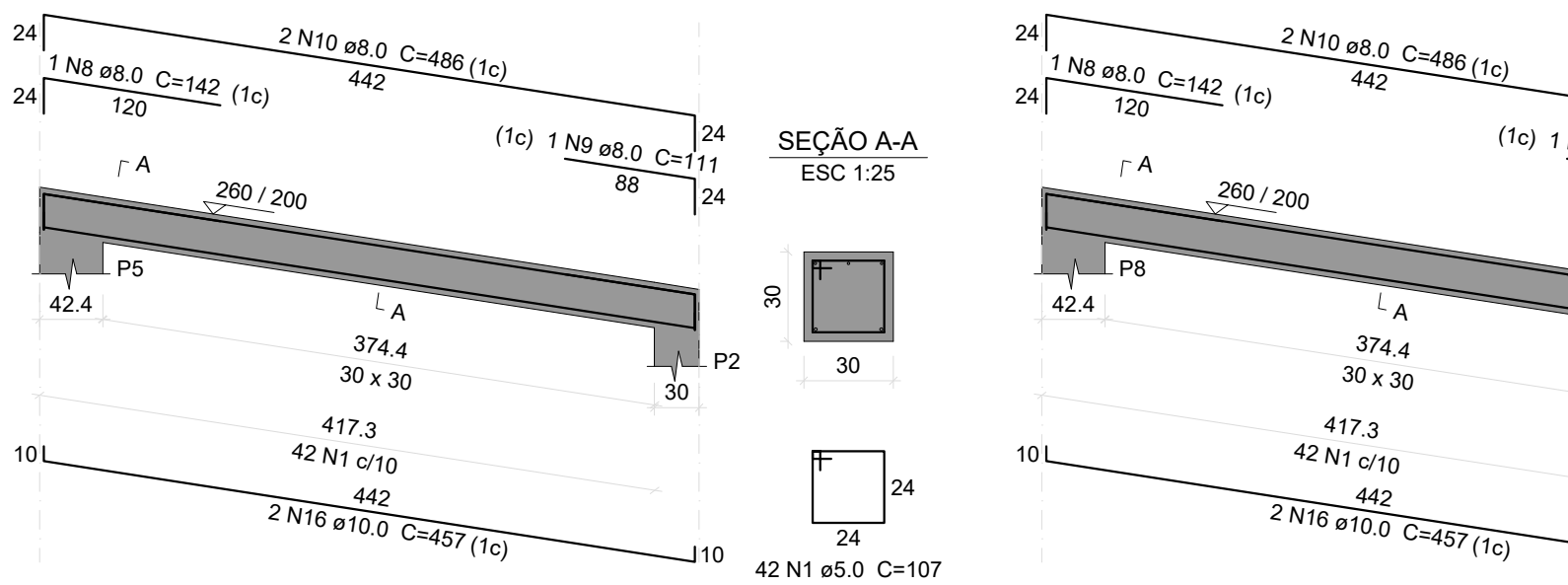
VT - 6

ESC 1:50



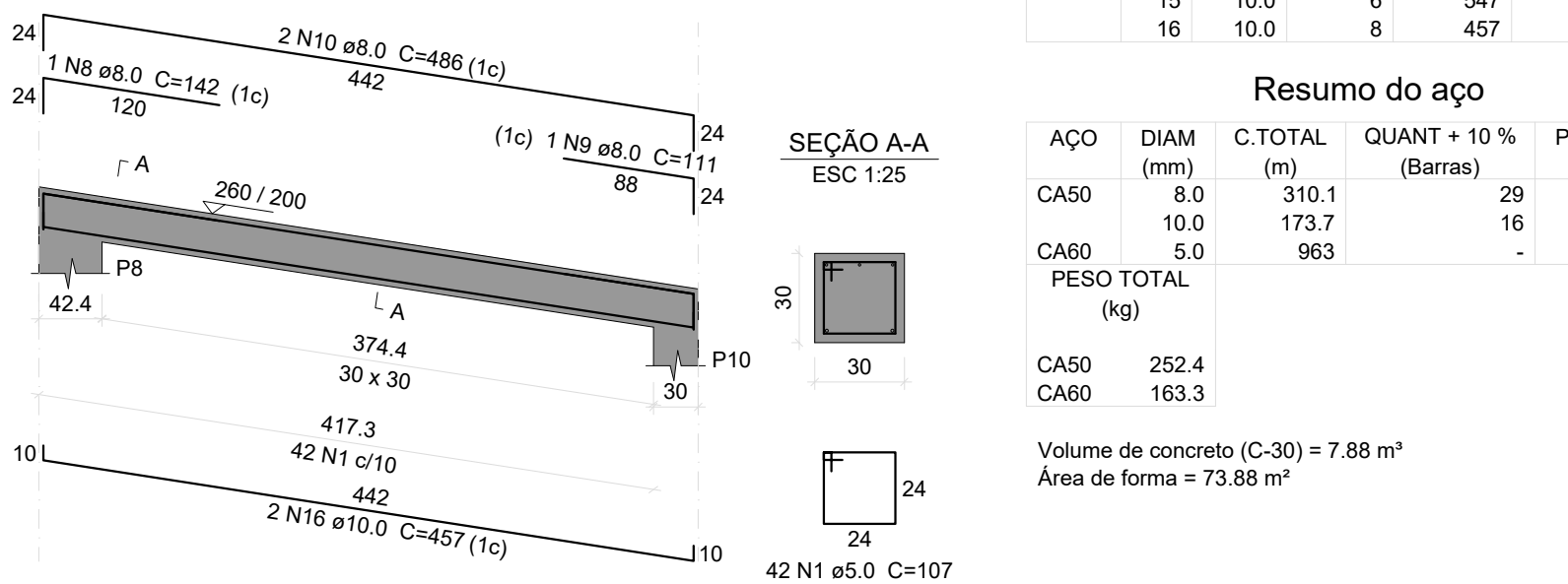
VT - 7

ESC 1:50



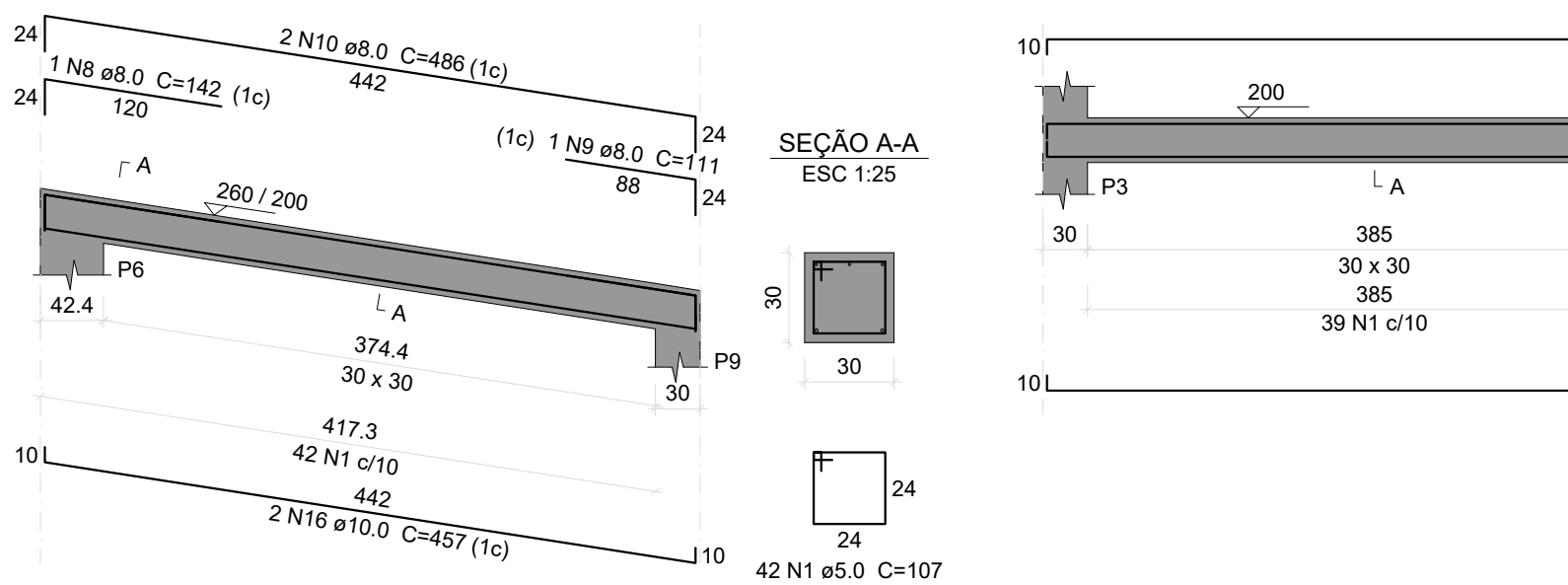
VT - 8

ESC 1:50



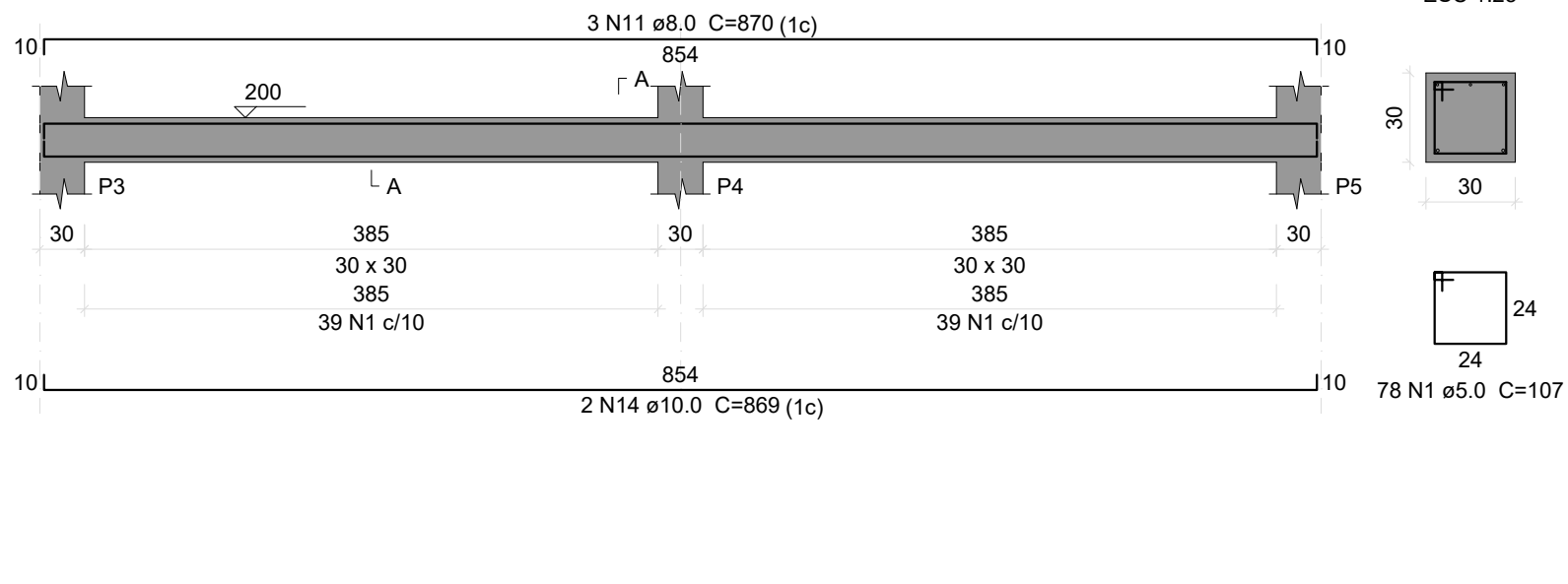
VT - 9

ESC 1:50



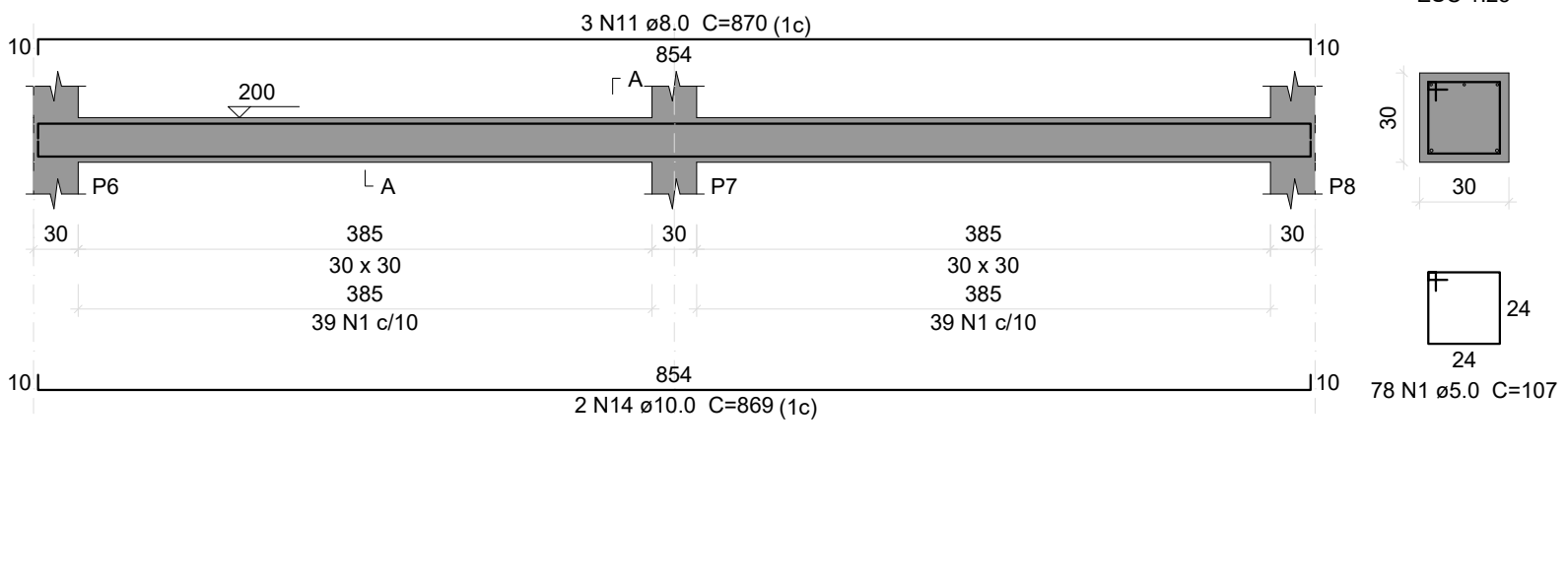
VT - 10

ESC 1:50



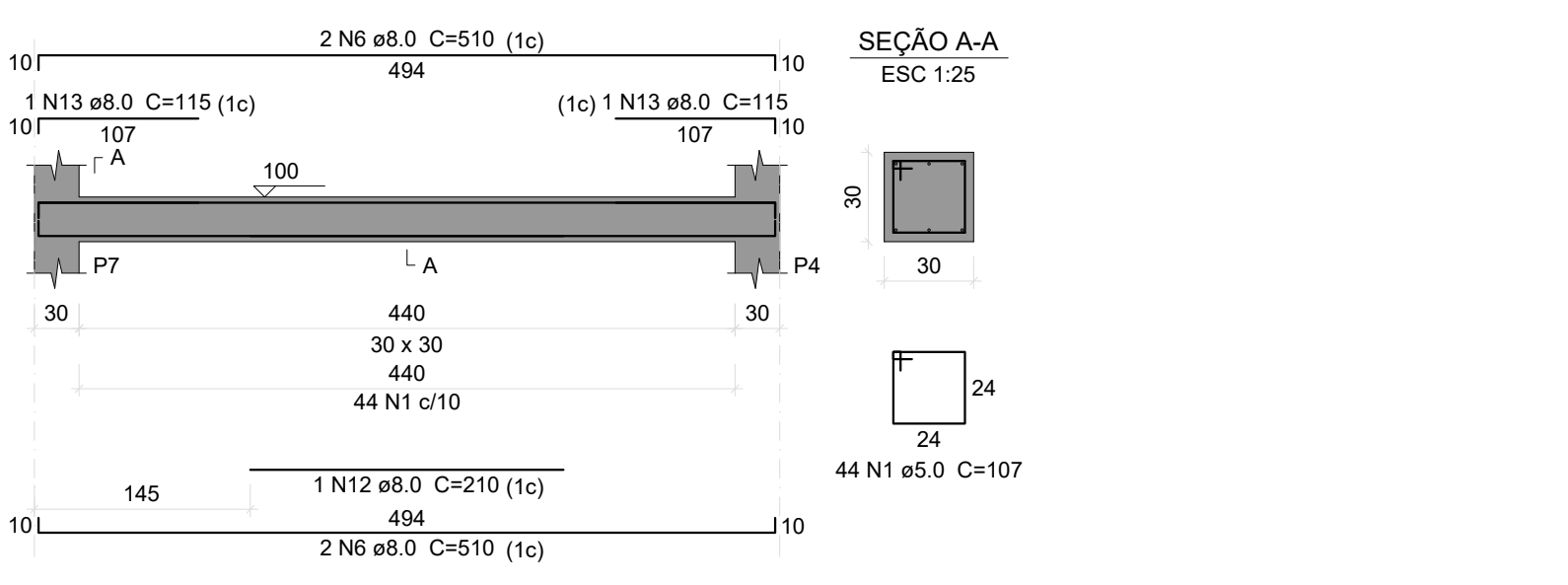
VT - 11

ESC 1:50



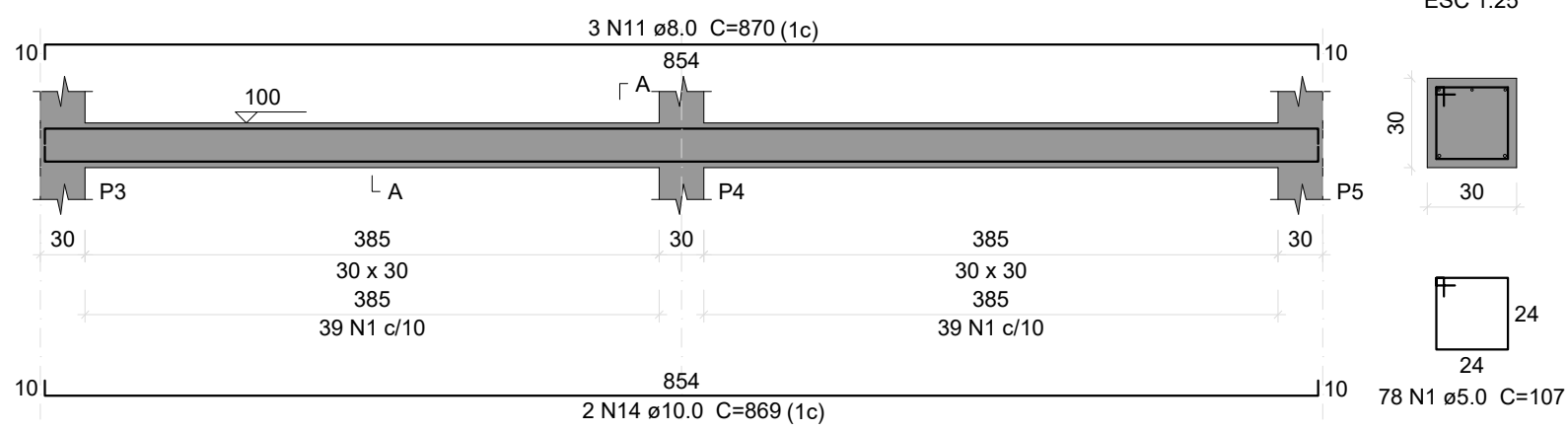
VT - 15

ESC 1:50



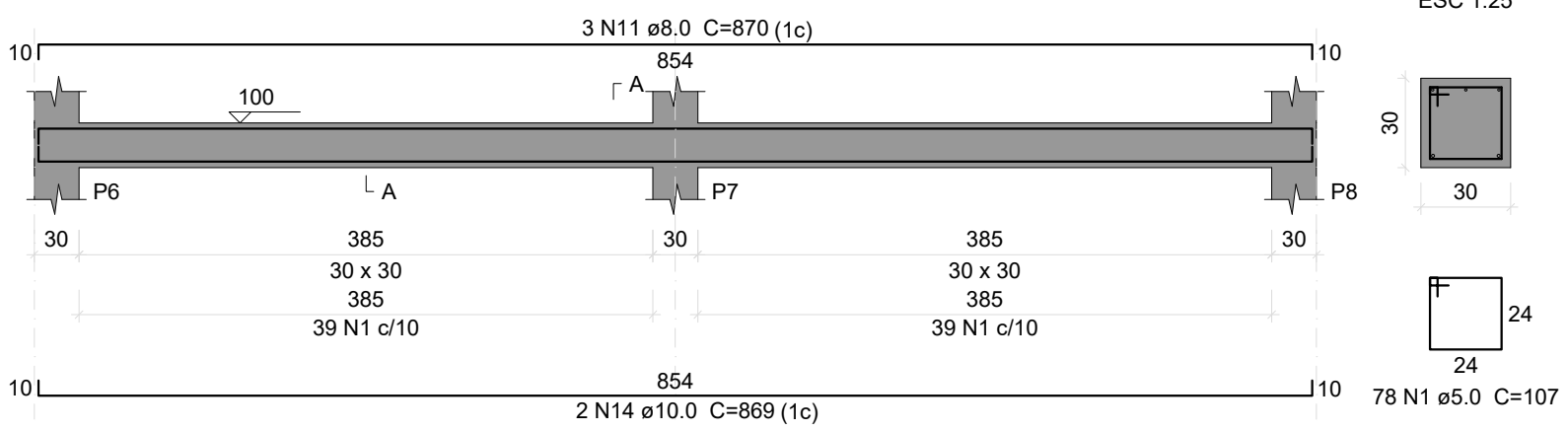
VT - 12

ESC 1:50



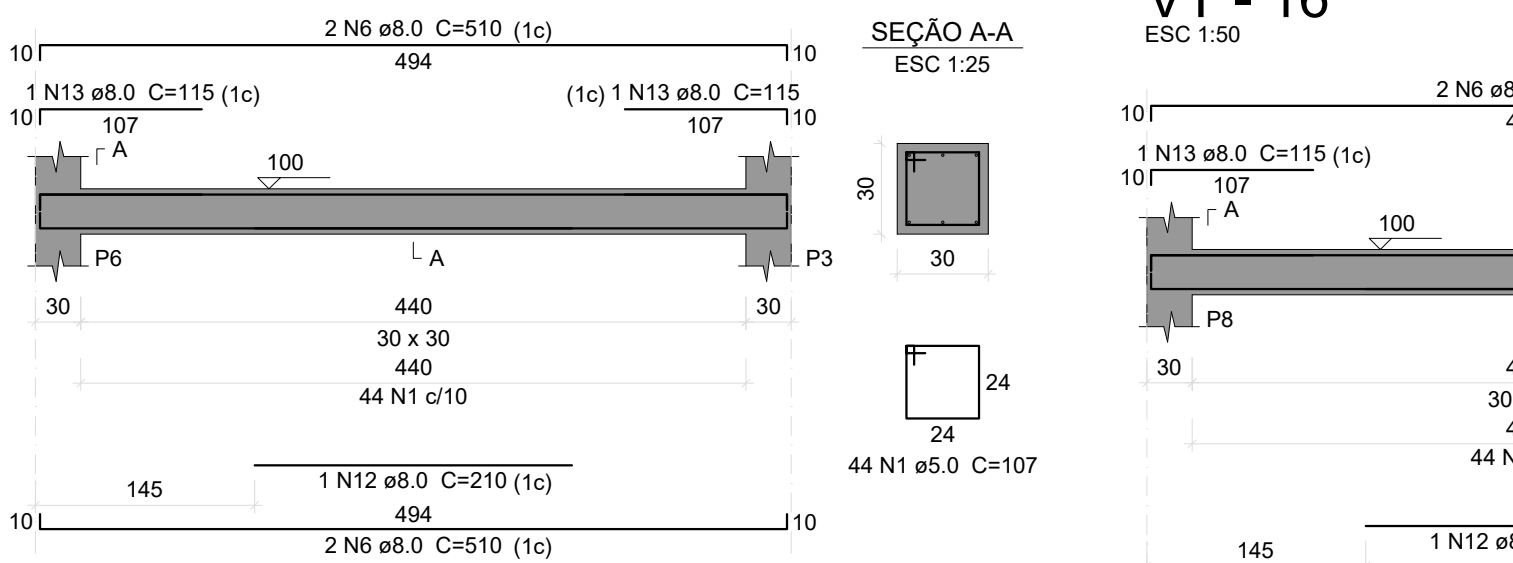
VT - 13

ESC 1:50



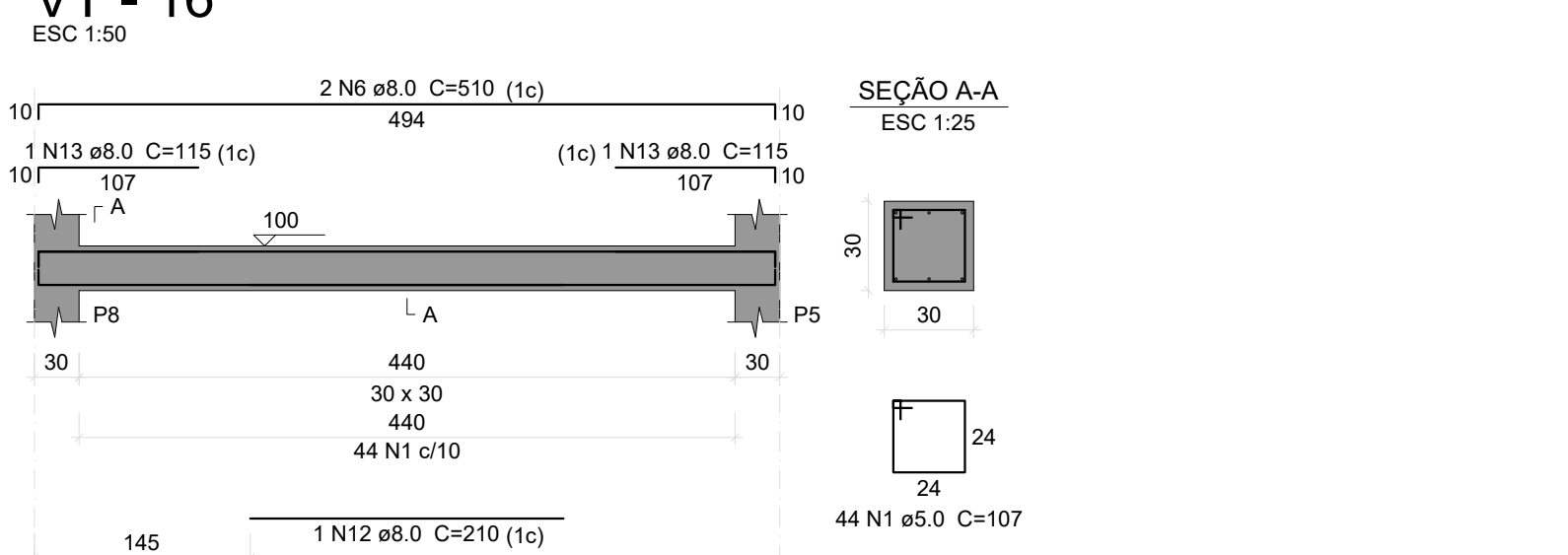
VT - 14

ESC 1:50



VT - 16

ESC 1:50



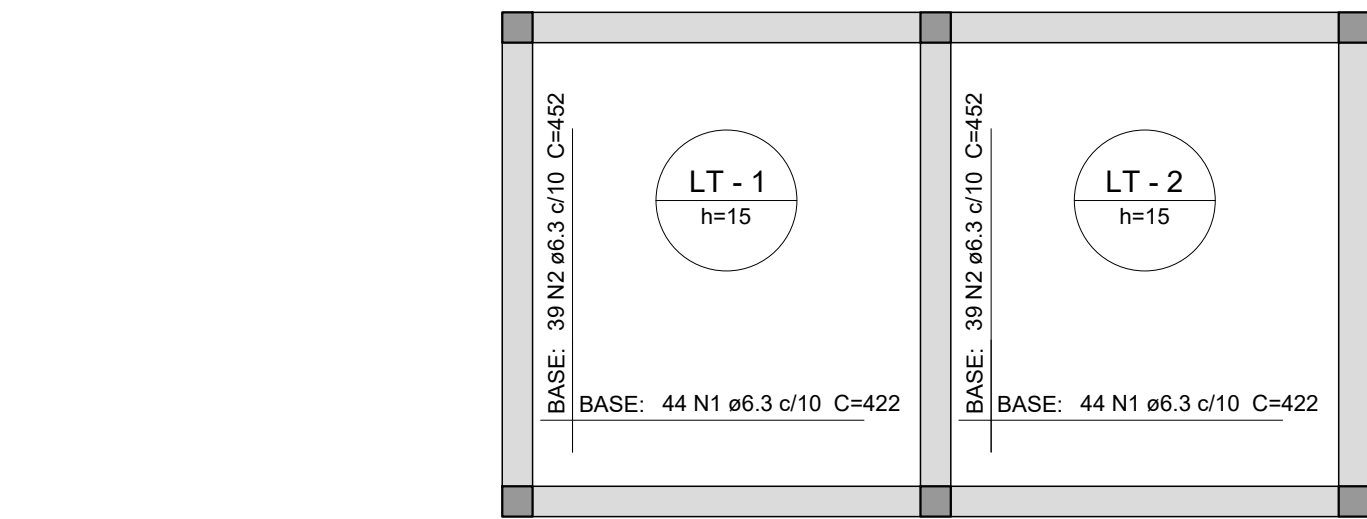
Relação do aço

AÇO	N	DIAM (mm)	QUANT	C.UNIT (cm)	C.TOTAL (cm)
CA60	1	5.0	900	107	96300
CA50	2	8.0	4	119	476
	3	8.0	2	170	340
	4	8.0	4	898	3592
	5	8.0	2	240	480
	6	8.0	18	510	9180
	7	8.0	1	280	280
	8	8.0	4	142	568
	9	8.0	4	111	444
	10	8.0	8	486	3888
	11	8.0	12	870	10440
	12	8.0	3	210	630
	13	8.0	6	115	690
	14	10.0	12	869	10428
	15	10.0	6	547	3282
	16	10.0	8	457	3656

Resumo do aço

AÇO	DIAM (mm)	C.TOTAL (m)	QUANT + 10 % (Barras)	PESO + 10 % (kg)
CA50	8.0	310.1	29	134.6
CA60	10.0	173.7	16	117.8
PESO TOTAL (kg)		963		163.3
CA50	252.4			
CA60	163.3			

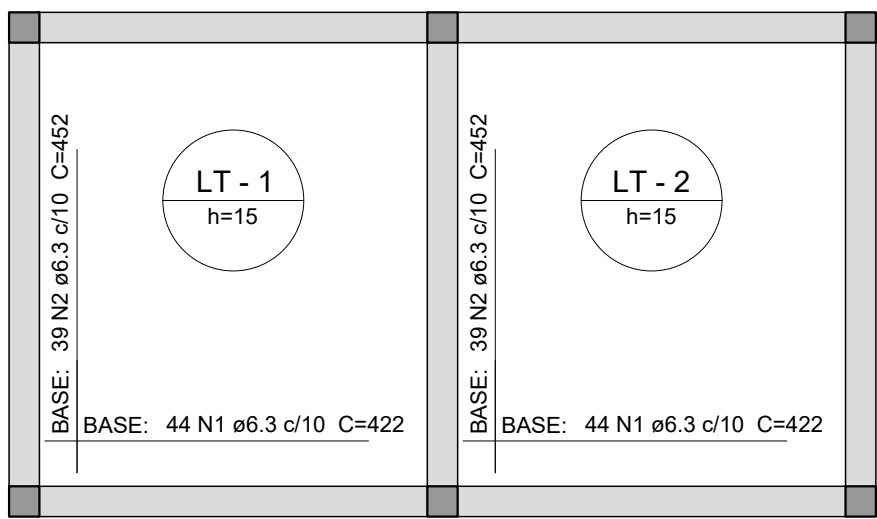
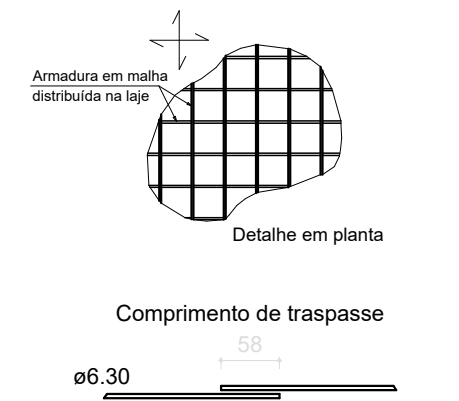
Volume de concreto (C-30) = 7.88 m³
Área de forma = 73.88 m²



Armação superior do radier do pavimento PASSAGEM TOPO (Eixo X/Y)

escala 1:75

DETALHE DA ARMADURA DE MALHA BASE



Armação inferior do radier do pavimento PASSAGEM TOPO (Eixo X/Y)

escala 1:75

Relação do aço

AÇO	N	DIAM (mm)	QUANT	C.UNIT (cm)	C.TOTAL (cm)
CA50	1	6.3	176	422	74272
	2	6.3	156	452	70512

Resumo do aço

AÇO	DIAM (mm)	C.TOTAL (m)	QUANT + 10 % (Barras)	PESO + 10 % (kg)
CA50	6.3	1447.9	133	389.7
PESO TOTAL (kg)				389.7
CA50				389.7

Volume de concreto (C-25) = 5.08 m³

PROJETO ESTRUTURAL

PROJETO ESTRUTURAL - PASSAGEM MOLHADA TABOCAL (EXTENSÃO - 8 METROS)

Descrição do Projeto: Detalhes armação das vigas superiores e lajes e Quadros de resumo.

Responsável Técnico:

Káren Mariana Soares Vieira
Engenheiro(a) Civil - Crea: 532.425-D/MG

Contratante:

Herivelto Alves Luiz
Prefeito Municipal de Glaucilândia-MG

Área (m²): 43.00 m²	Tipo da Edificação: Galeria	Prancha:
Data: 27 de Março de 2026	Art.: MG20264859622	
Referência / Número da pasta: VLK - 2PSP - GLA - 33	Escala: Indicada	

Contratada:



Contratante:



(38) 9 9977-6300
CNPJ: 57.955.661/0001-98
engenhariavlk@gmail.com
Avenida Coronel Prates, nº 409, Sala 301
Centro, Montes Claros-MG
(38) 3236-8136
CNPJ: 01.612.496/0001-17
administração@glauclandia.mg.gov.br
Praça José Brant Maia, nº 01
Centro, Glaucilândia-MG